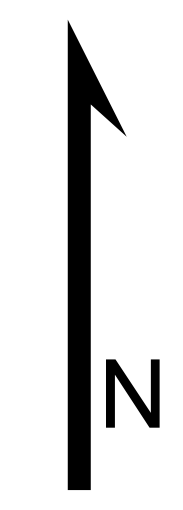


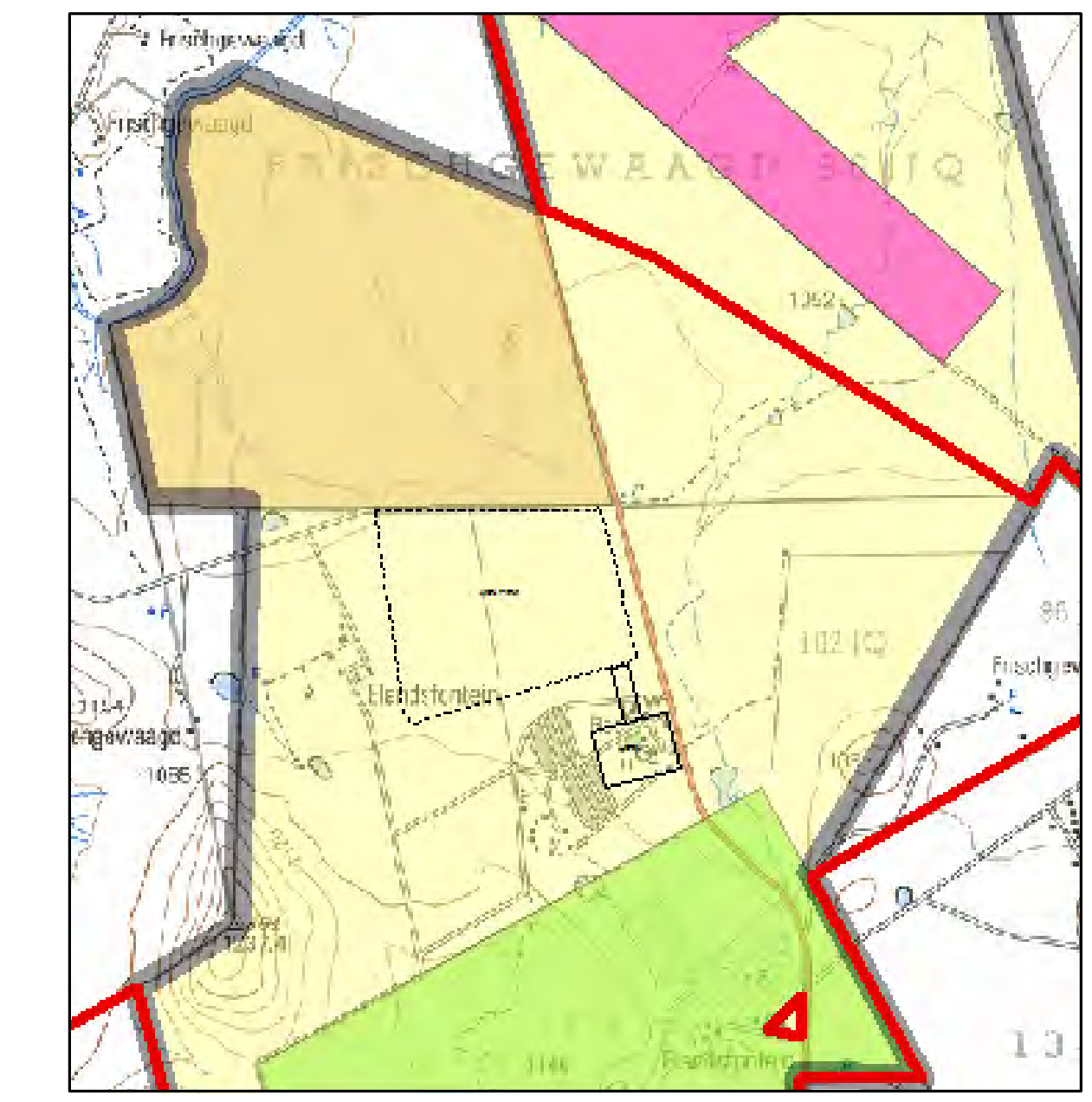
# Surface Rights Orientation



**PLATINUM GROUP METALS**  
 Platinum Group Metals (RSA) (Pty) Limited is a wholly owned subsidiary of Platinum Group Limited, a public company listed on the Toronto Stock Exchange

## Legend

-  MaseveBoundaryWG27
-  PTM\_SurfaceRights Total1
-  Wesizwe Shaft position
-  Styldrift Shaft positions
-  Impala 20 shaft
-  BRPM Declines
-  BRPM Uground Workings
-  Merensky Reef Outcrop
-  Inferred MR Subcrop
-  Wesizwe MiningRight
-  Van Vuuren
-  Grobler
-  PTM RSA



Platinum Group Metals (RSA) (Pty) Limited  
 Subsidiary of Platinum Group Metals Limited (Canada)  
 Listed PTM : TSX  
 Technology house  
 Greenacres Office Park  
 Victory park  
 Johannesburg 2129  
 Postnet Suite No. 81  
 Private Bag X12  
 Rooseveltpark 2129  
 +27 (0)11 782-2196 phone  
 +27 (0)11 782-4338 fax  
 +27 (0)11 82-821-8972 mobile

