



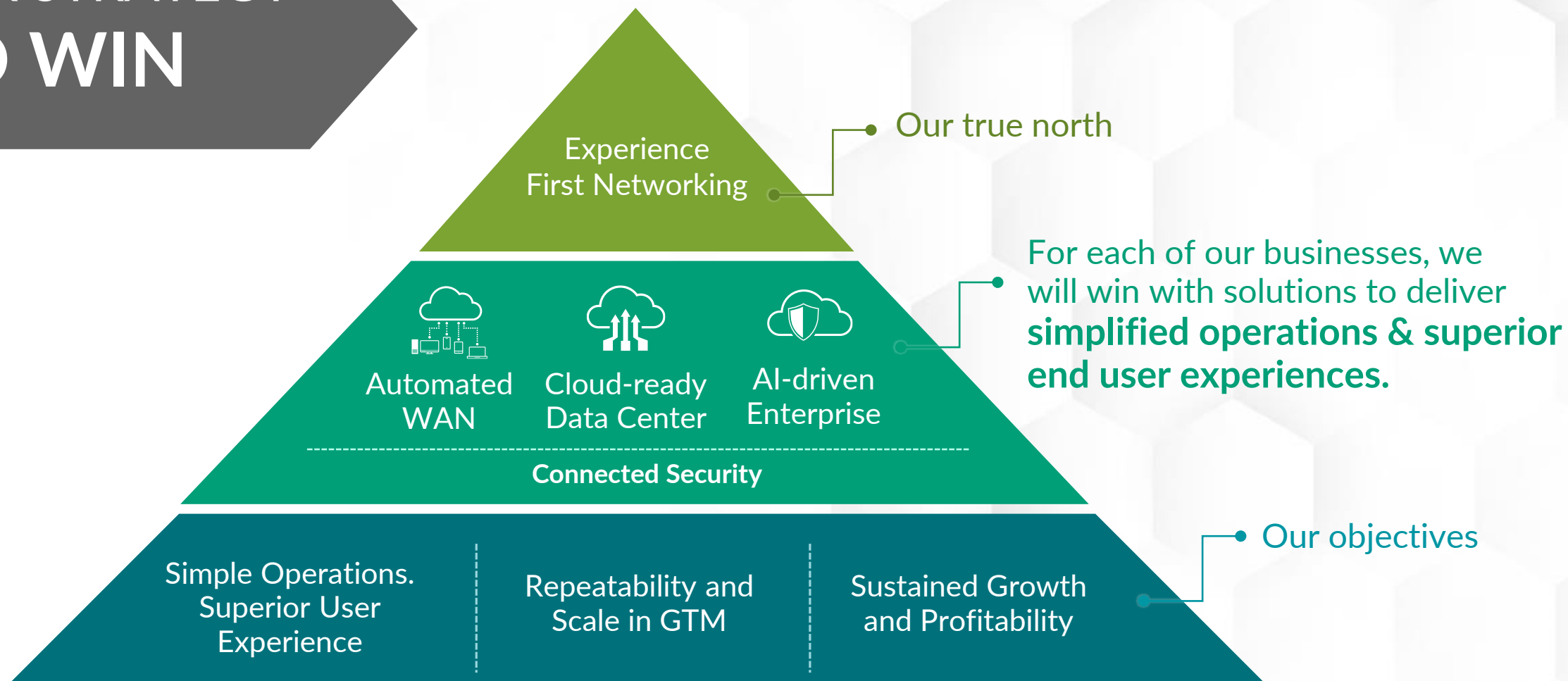
Juniper's Product Strategy

Manoj Leelanivas
EVP and Chief Product Officer

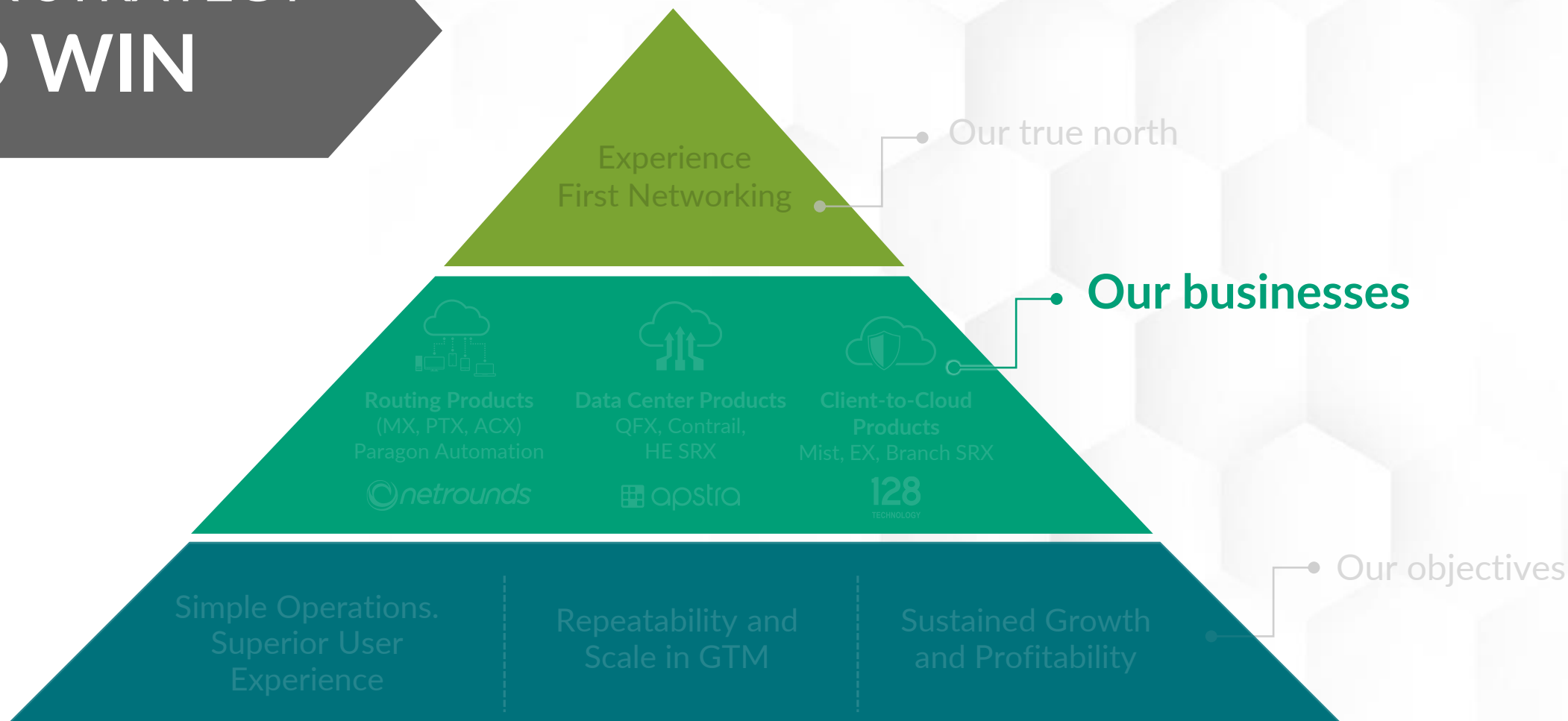
JUNIPER[®]
NETWORKS

Engineering
Simplicity

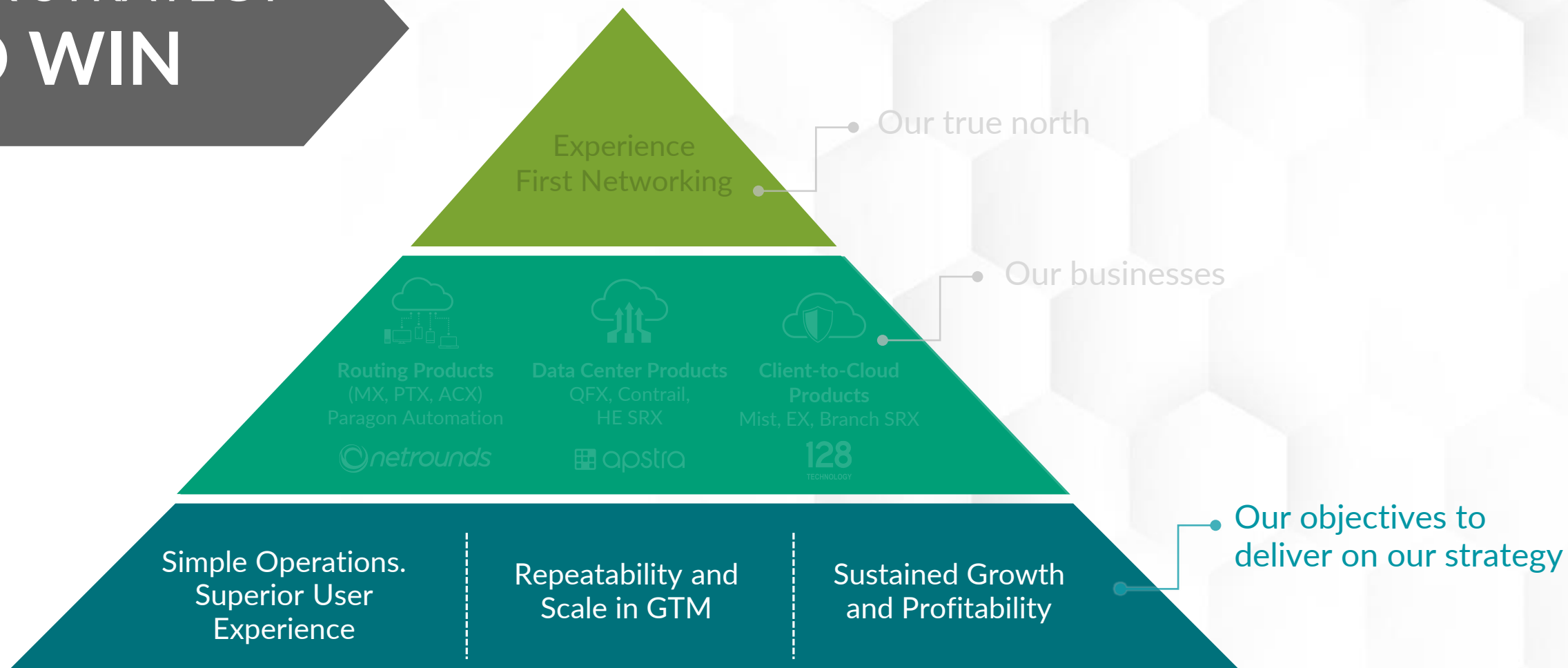
OUR STRATEGY TO WIN



OUR STRATEGY TO WIN



OUR STRATEGY TO WIN



01

AUTOMATED WAN



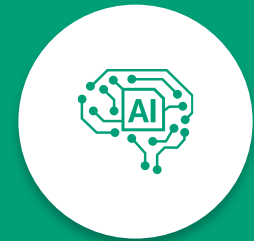
02

CLOUD-READY DATA CENTER



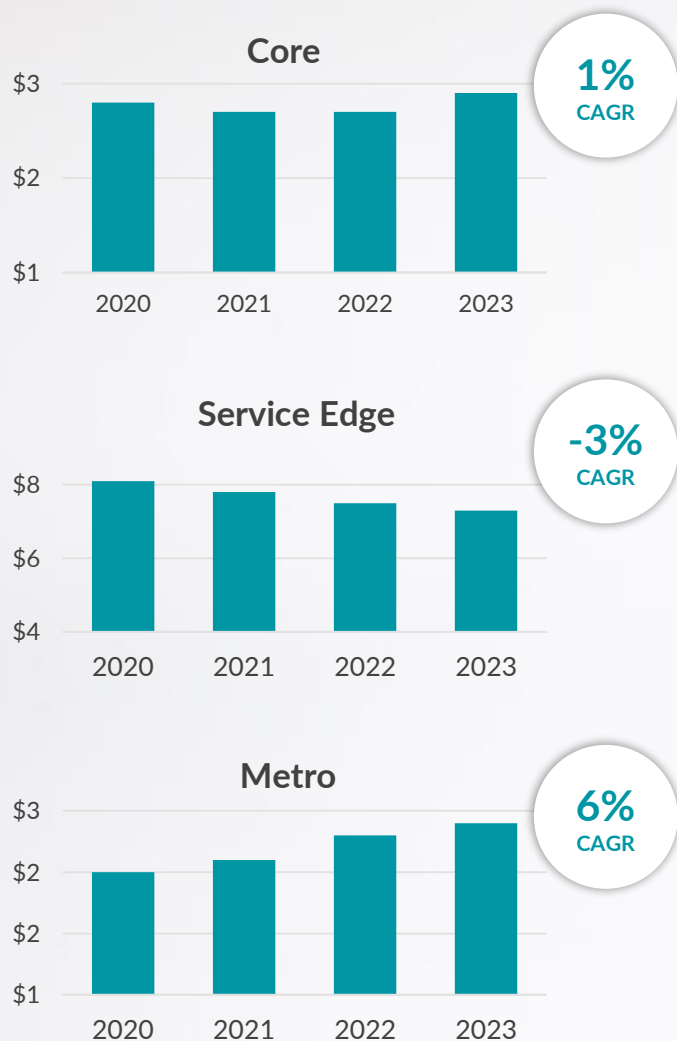
03

AI-DRIVEN ENTERPRISE





Target Markets – TAM (\$B)



Key Market Inflections

- 400G Adoption in Cloud and Service Providers
- 5G and Cloud driving next-gen metro and edge architectures
- Enterprise digitalization
- Focus on Experience and TCO reduction

Product Strategy

- Win 400G refresh with differentiated portfolio
- Lead with automation and assurance
- Expand into high-growth 5G-ready Metro market

GTM Strategy

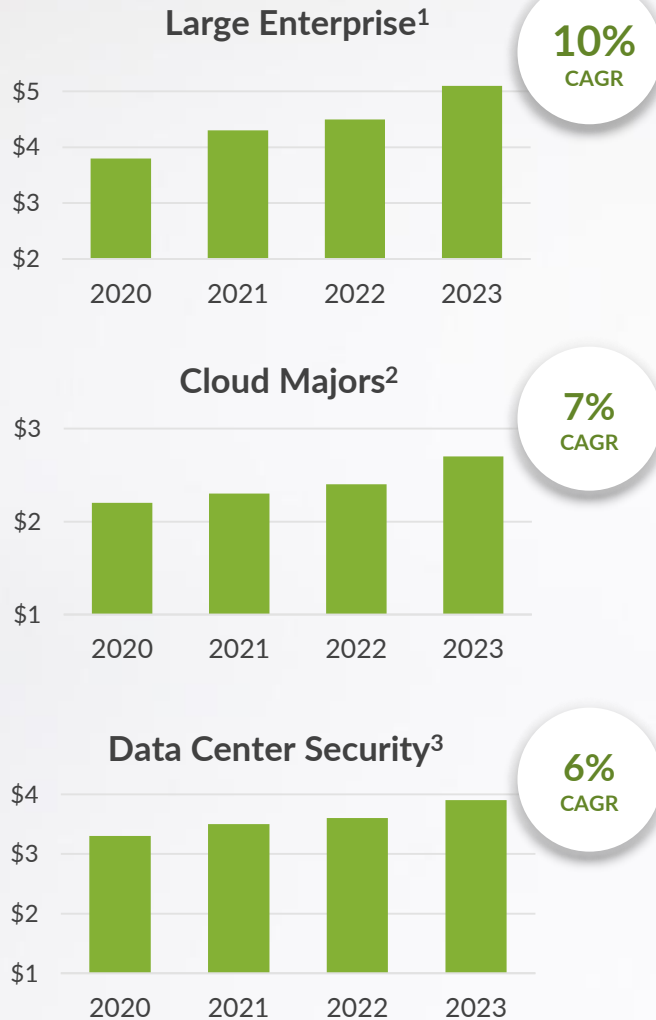
- Continue customer diversification
 - Cloud Majors
 - Tier 2/3 SP
 - High End Enterprise

3-Yr Business Projection: Stable to Slight Growth

Source: ACG Research



Target Markets – TAM (\$B)



1, 2 - 650 Group 3- Omdia

Key Market Inflections

- Hybrid and multicloud Data Centers
- Hyperscale-like operations
- Automation and AIOps
- 400G adoption and disaggregation in hyperscalers
- Integrated security + networking

Product Strategy

- Drive adoption of best-in-class 400G & dense 100G DC switches with cloud-optimized OS
- Lead with industry leading Intent-based Fabric Management
- Attach high-end firewall
- Embrace disaggregation at hyperscalers

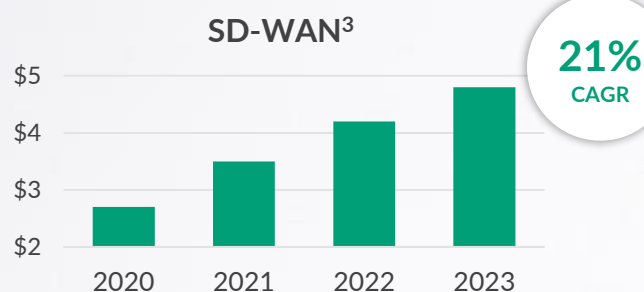
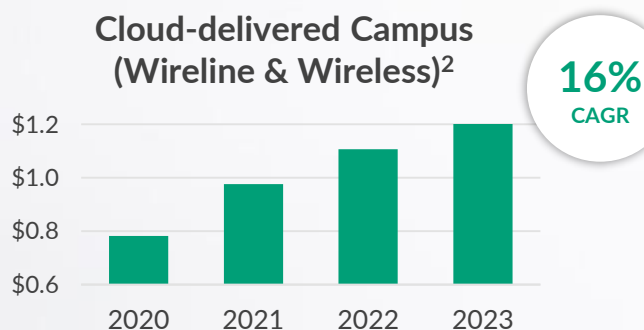
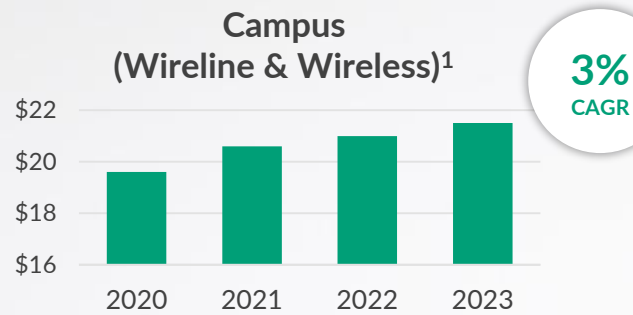
GTM Strategy

- Scale Sales with Data Center specialists
- Focus on System Integrators
- Drive Apstra-powered turnkey solutions for channel

3-Yr Business Projection: High Single-Digit Growth



Target Markets – TAM (\$B)



1,2 - 650 Group 3 - Gartner

Key Market Inflections

- Wi-Fi 6-led wireless refresh
- Accelerated shift to cloud
- Evolving workspaces driving the need for automated operations from client-to-cloud
- Network and security convergence

Product Strategy

- Enhance the lead in cloud-first, assurance-led Mist Wireless + Wireline portfolio
- Bring entire portfolio under common umbrella of Mist AI
- Connected Security from client-to-cloud

GTM Strategy

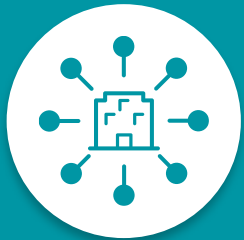
- POC. Sale. Repeat.
- Leverage Gartner MQs
- Scale Enterprise GTM motion
- Upsell the client-to-cloud portfolio: WLAN-LAN-WAN-Security

3-Yr Business Projection: Double-Digit Growth

Experience-First Transformation: Common Themes

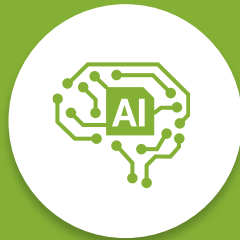
01

400G experience
driven by best
cost/bit and
integrated security



02

Self-driving network
experience created by
automation and
AI-driven support



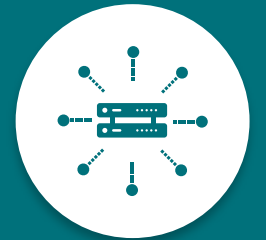
03

Embrace open
standards, APIs, and
disaggregation



04

Customer
diversification and
repeatable GTM
motion



Leadership Positions in Enterprise

A LEADER



Magic Quadrant
For wired &
wireless LAN
access
infrastructure

Gartner®

A LEADER



Magic Quadrant
For data
center & cloud
networking

Gartner®

A VISIONARY



Magic Quadrant
For WAN edge
infrastructure

Gartner®

A CHALLENGER



Magic Quadrant
For network
firewalls

Gartner®

A VISIONARY



Magic Quadrant
For indoor
location services,
global

Gartner®

Gartner Magic Quadrant for Data Center Networking, Andrew Lerner, Jonathan Forest, Evan Zeng, Joe Skorupa, 30 June 2020.

Gartner Magic Quadrant for WAN Edge Infrastructure, Jonathan Forest, Andrew Lerner, Naresh Singh, 23 September 2020.

Gartner Magic Quadrant for Wired and Wireless LAN Access Infrastructure, Bill Menezes, Christian Canales, Mike Toussaint, Tim Zimmerman, 4 November 2020.

Gartner Magic Quadrant for Network Firewalls, Rajpreet Kaur, Adam Hills, Jeremy D'Hoinne, 9 November 2020.

Gartner Magic Quadrant for Indoor Location Services, Global, Tim Zimmerman, Annette Aimmerman 13 January 2020

GARTNER is a registered trademark and service mark of Gartner, Inc. and/or its affiliates in the US and internationally and is used with permission. All rights reserved. Gartner does not endorse any vendor, product or service depicted in its research publications, and does not advise technology users to select only those vendors with the highest ratings or other designation. Gartner research publications consist of the opinions of Gartner's research organization and should not be construed as statements of fact. Gartner disclaims all warranties, expressed or implied, with respect to this research, including any warranties of merchantability or fitness for a particular purpose.

A low-angle, black and white photograph of several modern skyscrapers with glass facades, reaching towards the sky. The perspective creates a sense of height and architectural grandeur. A large, semi-transparent green rectangle is overlaid in the center of the image, serving as a background for the text.

Thank you

JUNIPER
NETWORKS®

Engineering
Simplicity