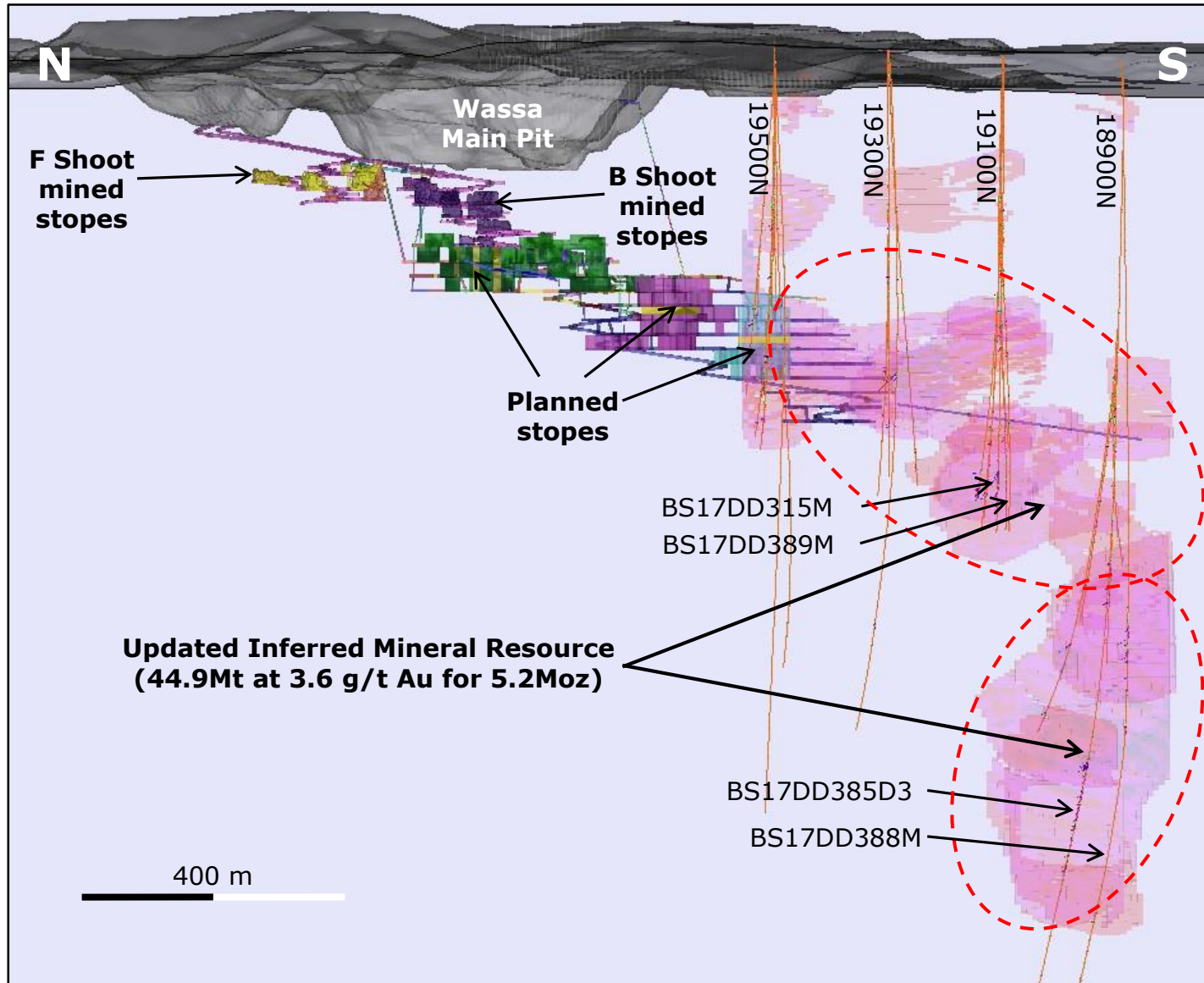
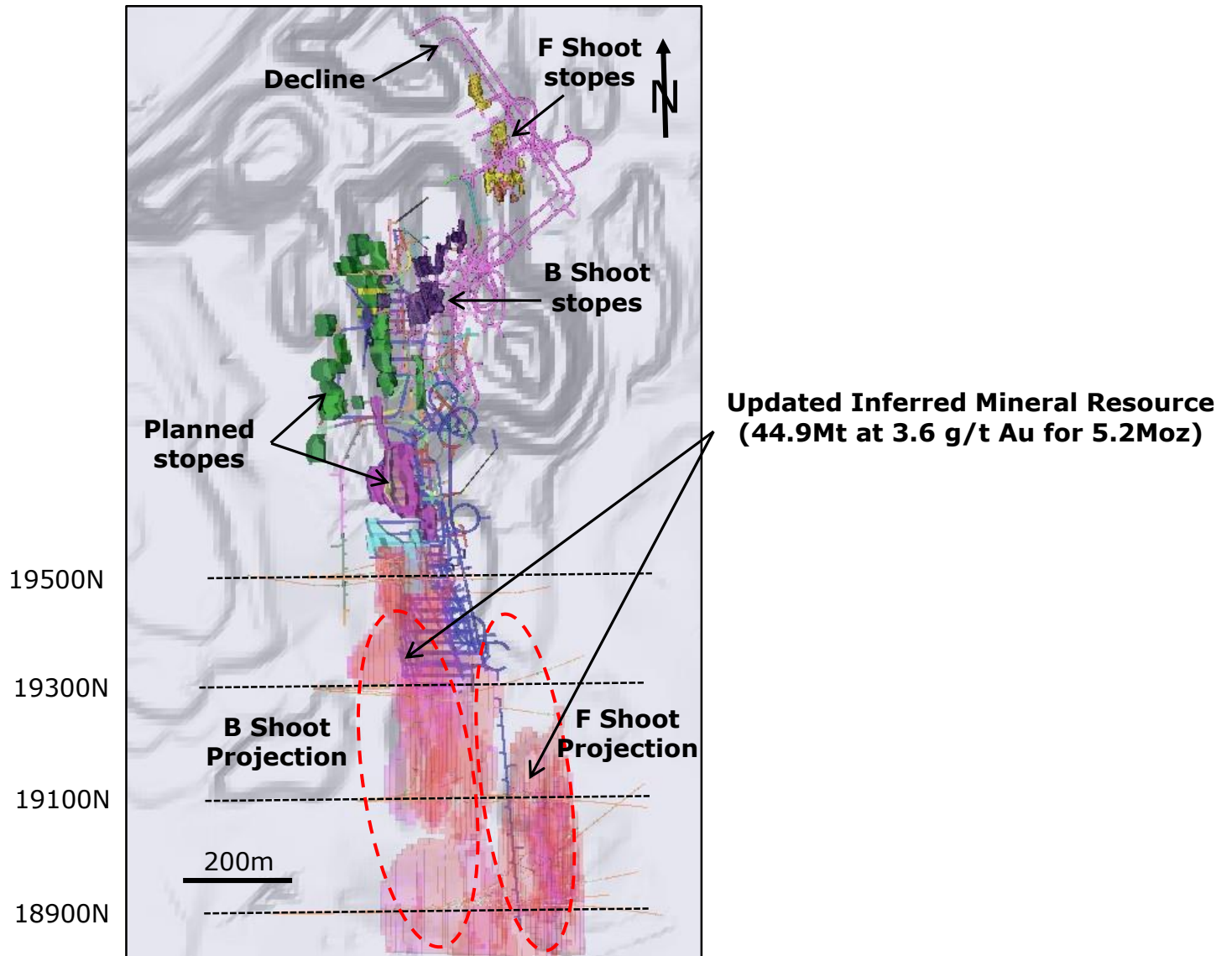


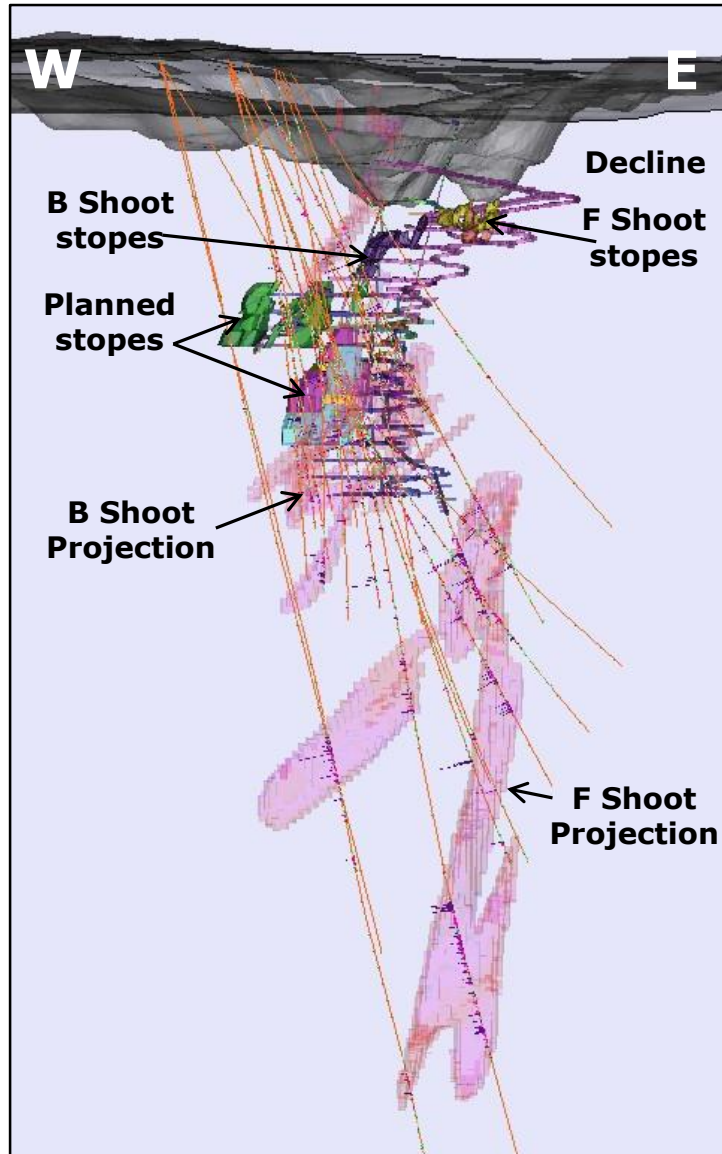
Wassa Inferred Resource Update – Isometric View Looking East



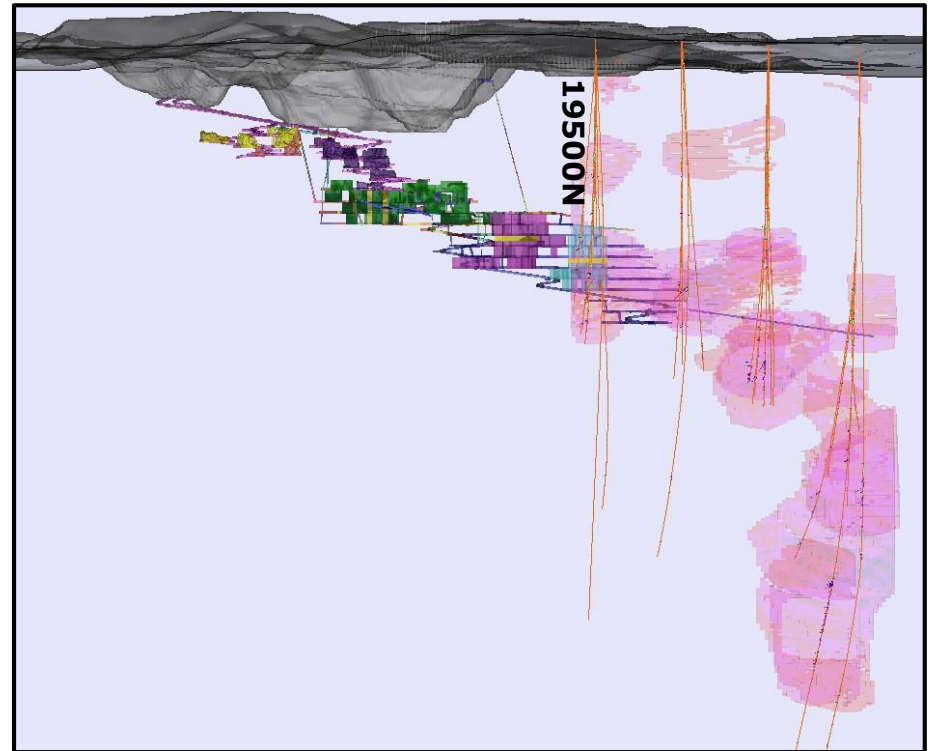
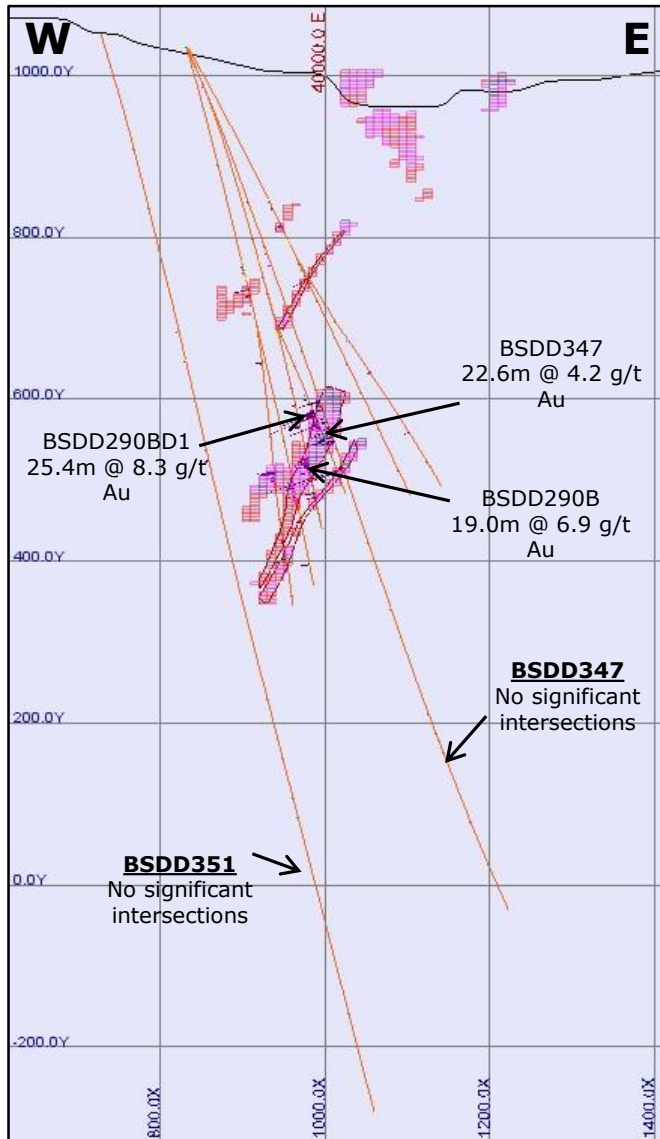
Wassa Underground Drill Plan View



Wassa Underground – Isometric View Looking North



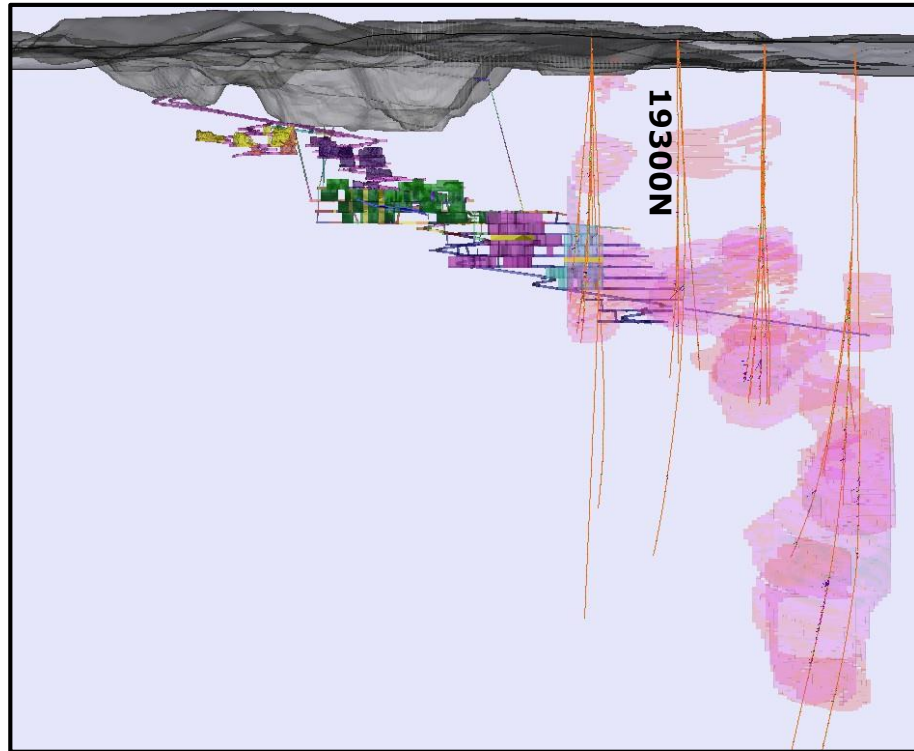
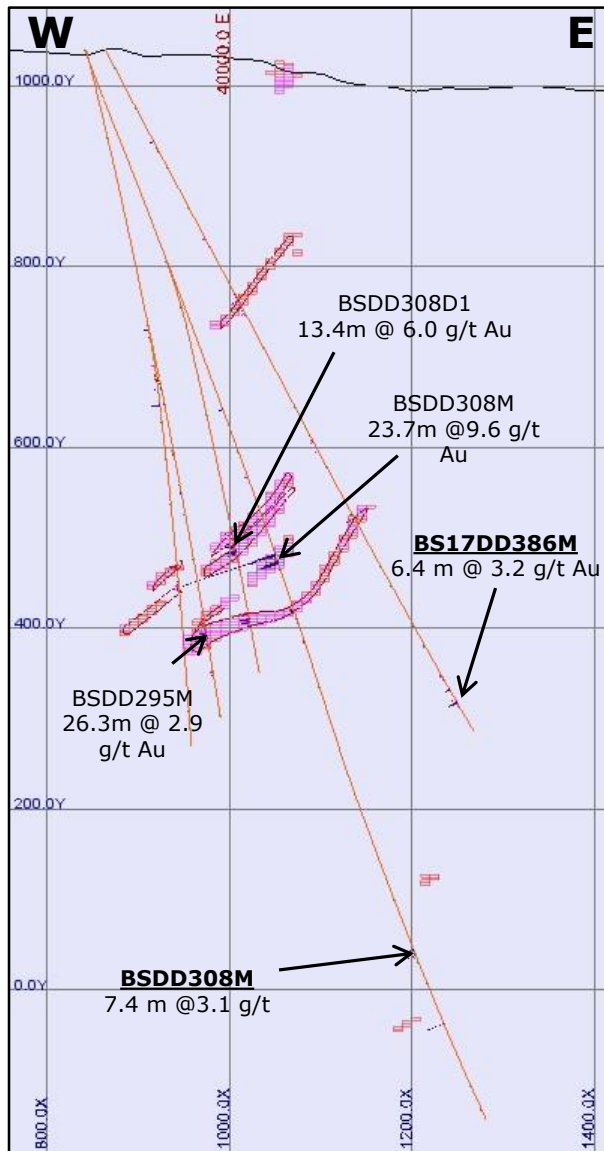
B Shoot South Drilling: 19500



19500N

- Two additional holes used in Inferred Mineral Resource estimate: BSDD347 (Bottom) & BSDD351 (Bottom)

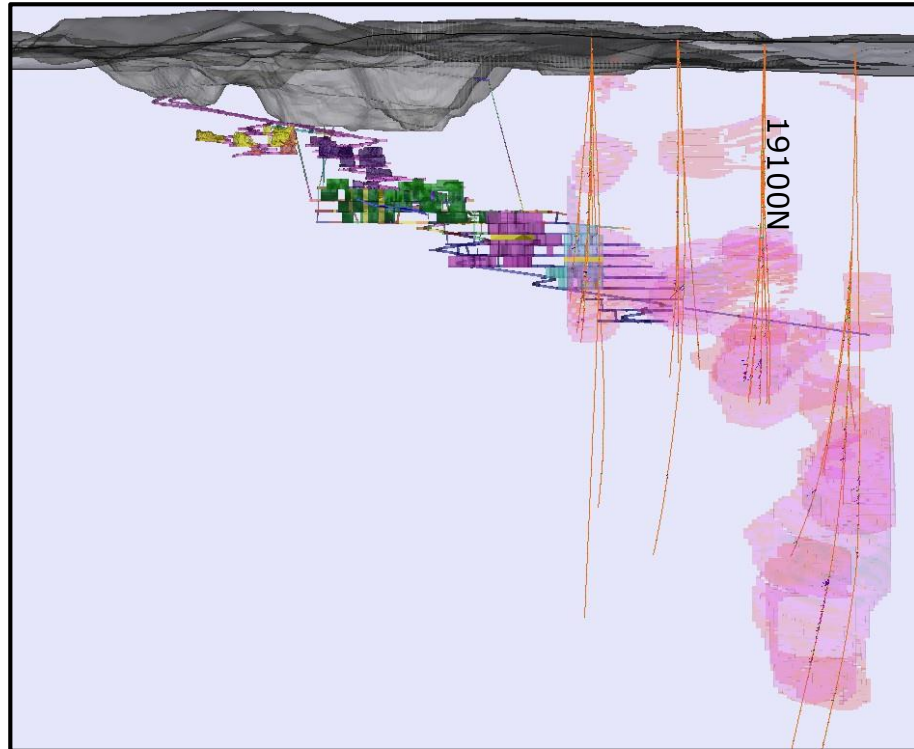
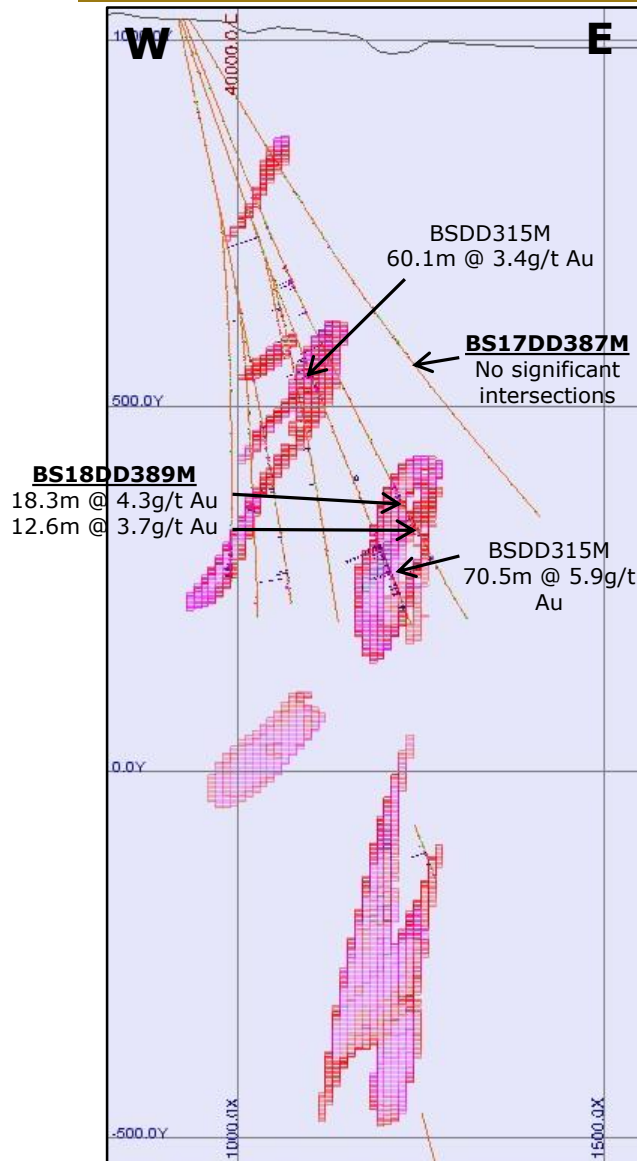
B Shoot South Drilling: 19300 N



19300N

- Two additional holes used in Inferred Mineral Resource estimate: BSDD308M (Bottom) & BS17DD386M

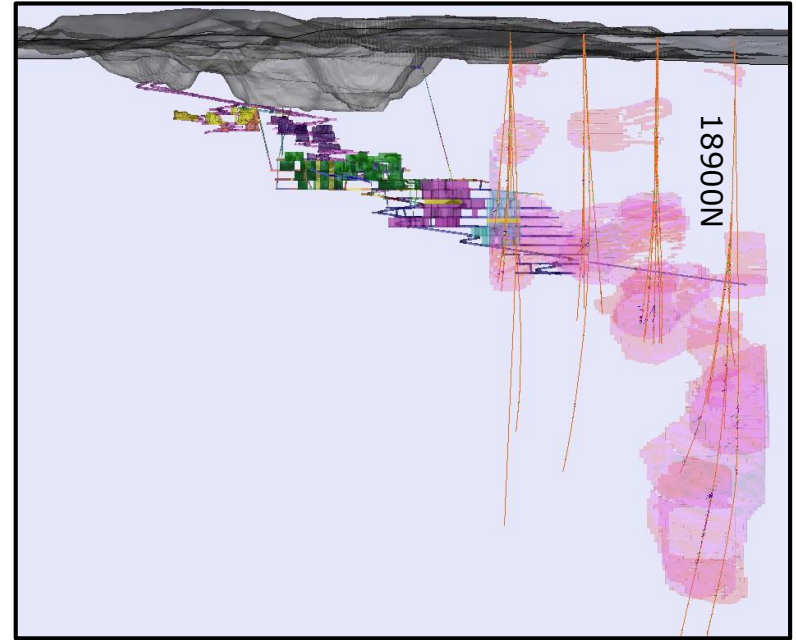
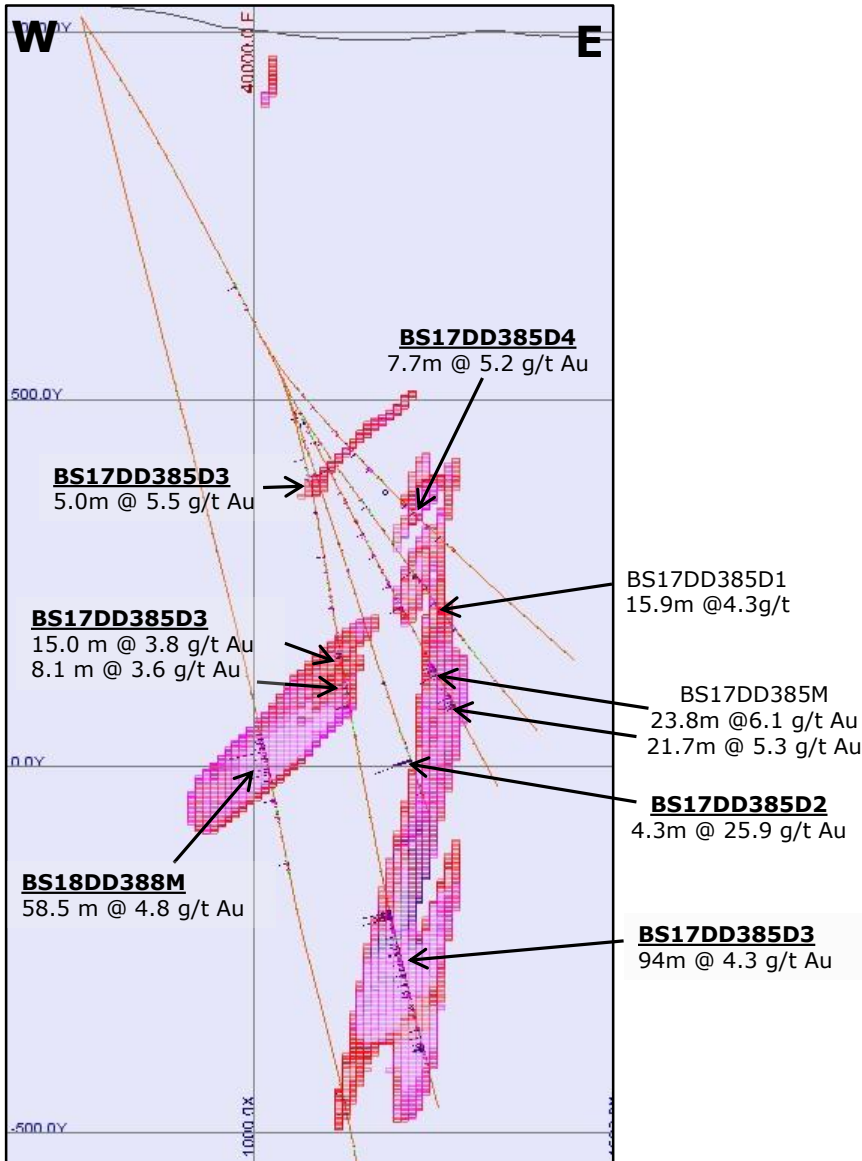
B Shoot South Drilling: 19100N



19100N

- Two additional holes used in Inferred Mineral Resource estimate: BS17DD387M & BS17DD389M

B Shoot South Drilling: 18900N



18900N

- Four additional holes used in Inferred Mineral Resource estimate:
BS17DD385D2, BS17DD385D3,
BS17DD385D4 & BS18DD388M