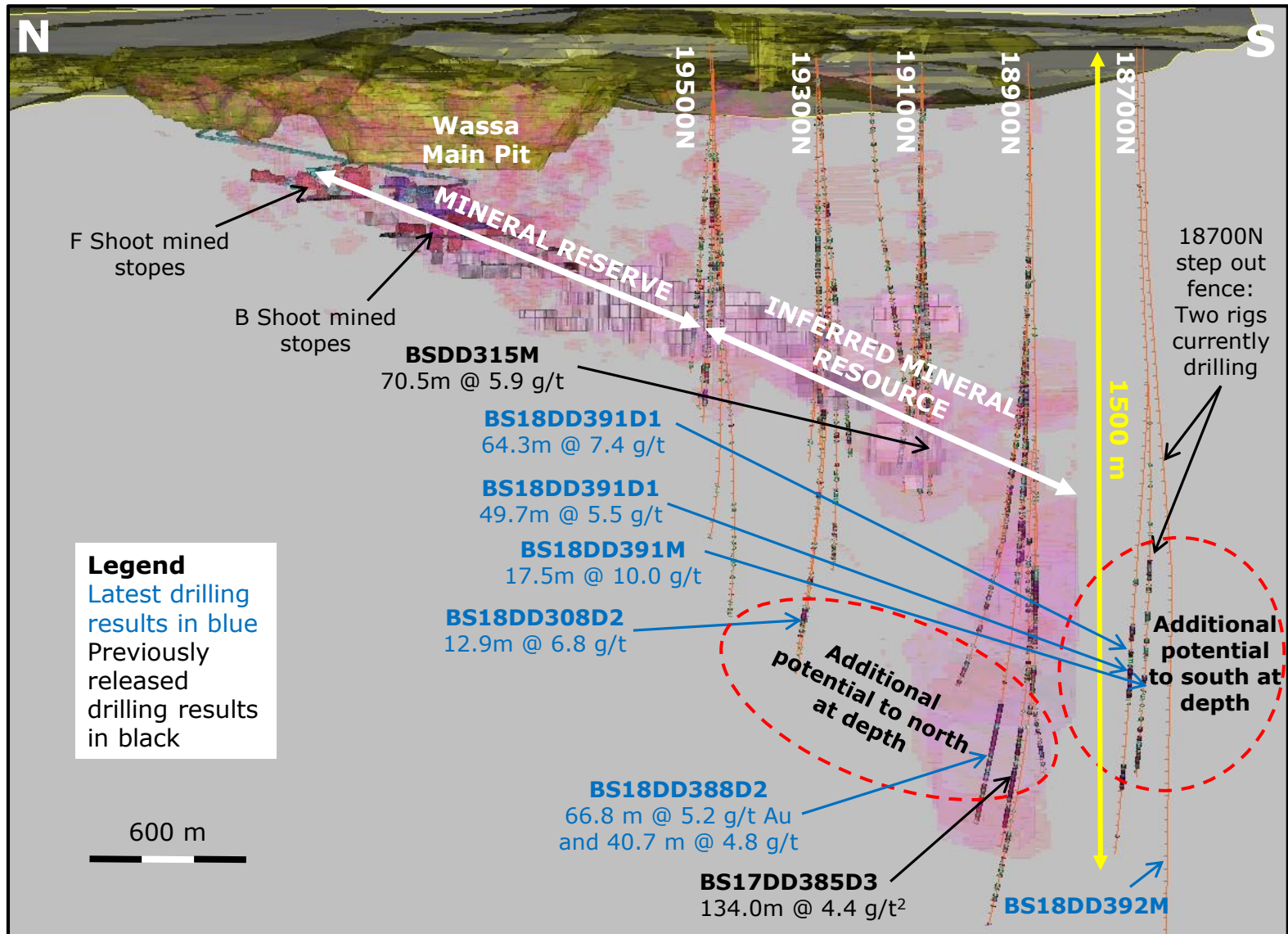
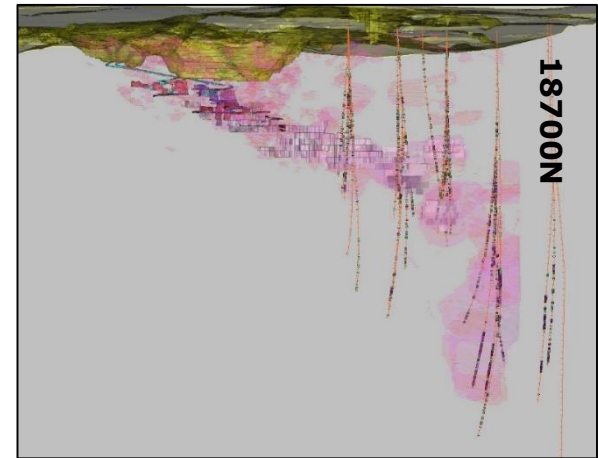
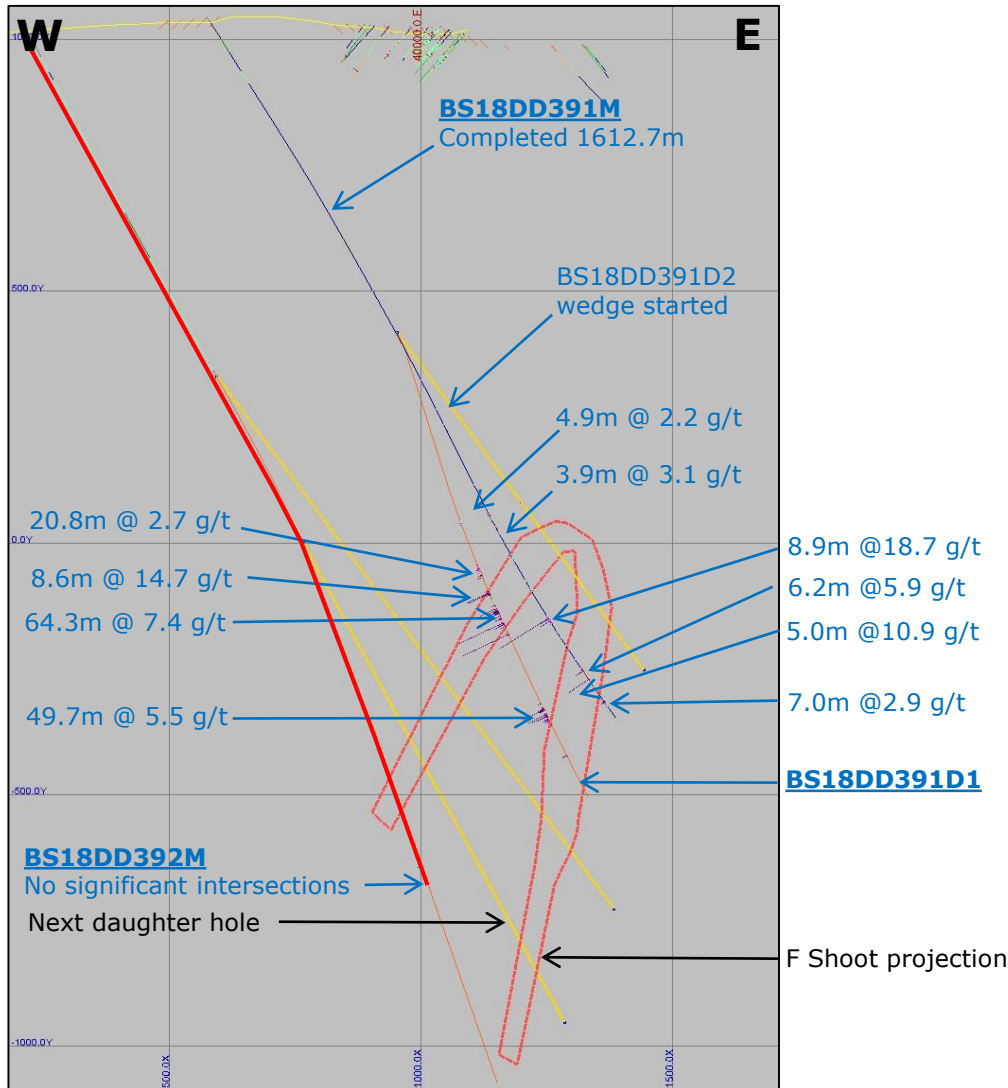


Wassa South Drilling: Isometric View Looking East¹

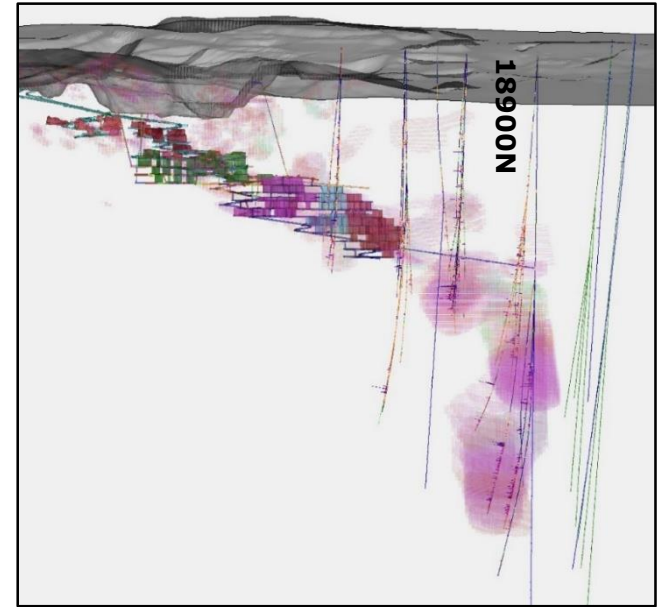
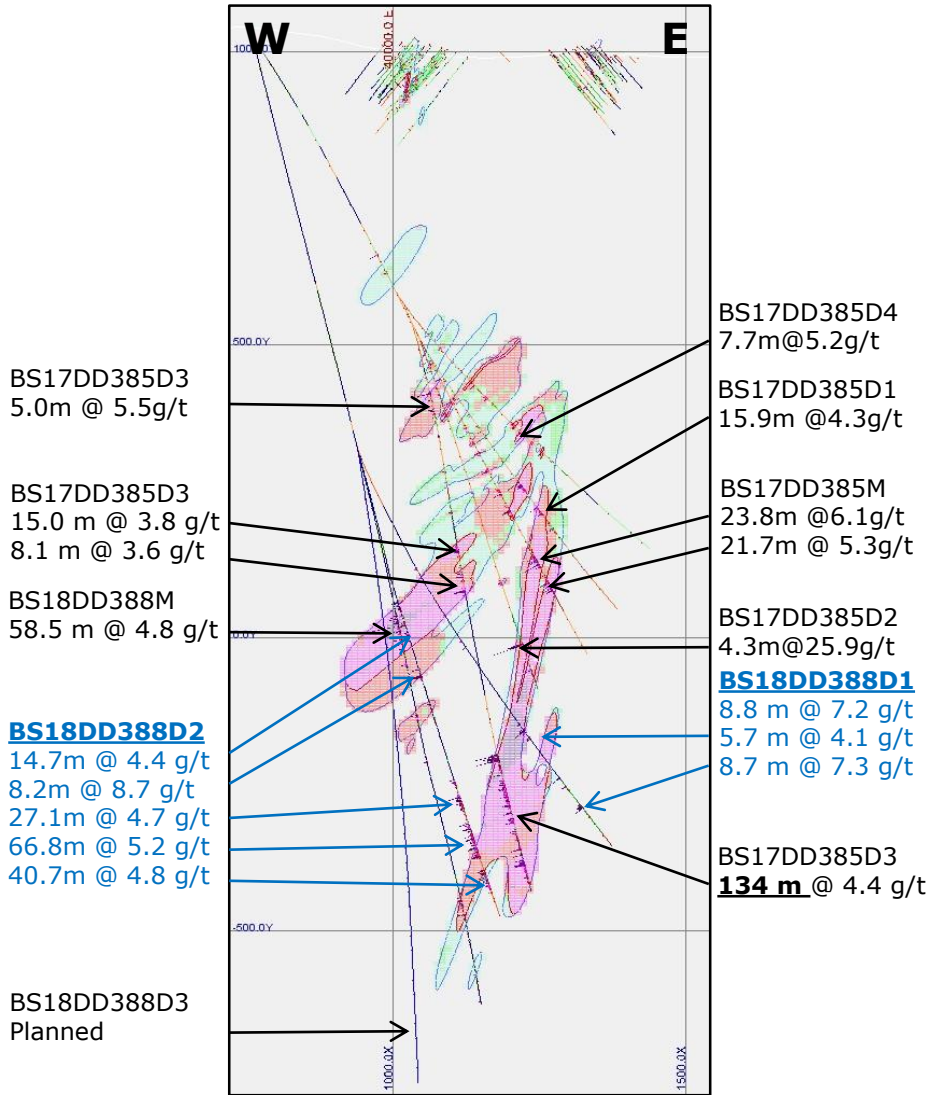


Wassa South Step Out Drilling: 18700N



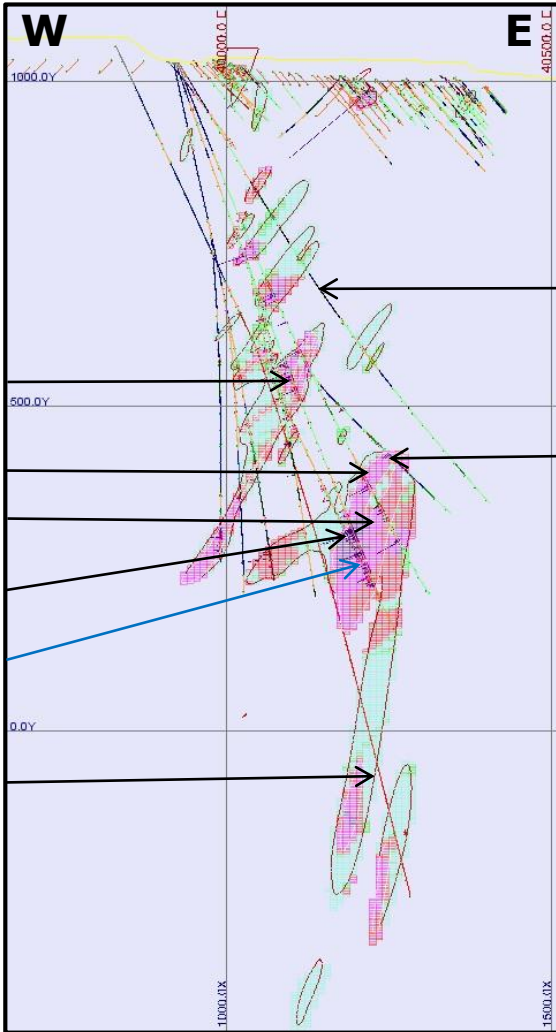
- First daughter hole (391D1) demonstrates extension of current gold mineralization 200 m to south of current Inferred Mineral Resource – expected to result in addition of Inferred Mineral Resources
- Second daughter hole (391D2) will target area ~100m above mother hole
- Hole 392M terminated early due to down hole drilling problems

Wassa South Drilling: 18900N



- Results received for two holes on 18900N drill pad
- These results are expected to have a positive effect on Wassa's Inferred Mineral Resources

Wassa South Drilling: 19100N



BSDD315M
60.1m @ 3.4g/t

BS18DD389M
18.3m @ 4.3g/t
12.6m @ 3.7g/t

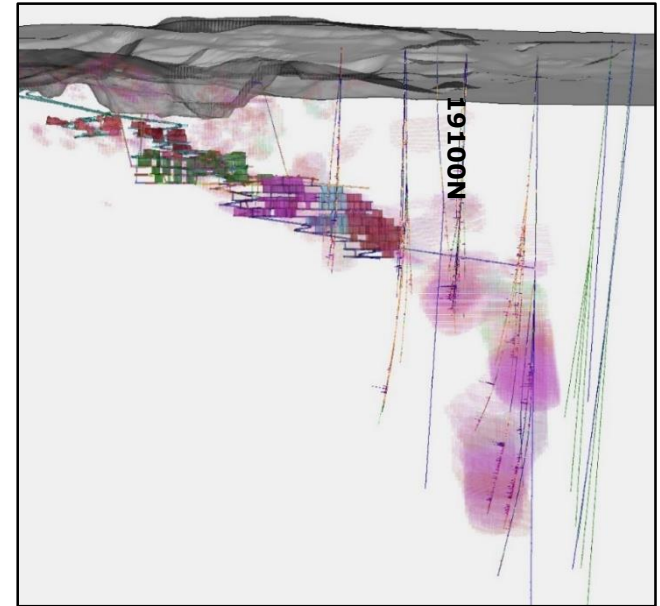
BSDD315M
70.5m @ 5.9g/t

BS18DD390M
8.5m @ 6.5g/t

BS18DD390D1
Planned

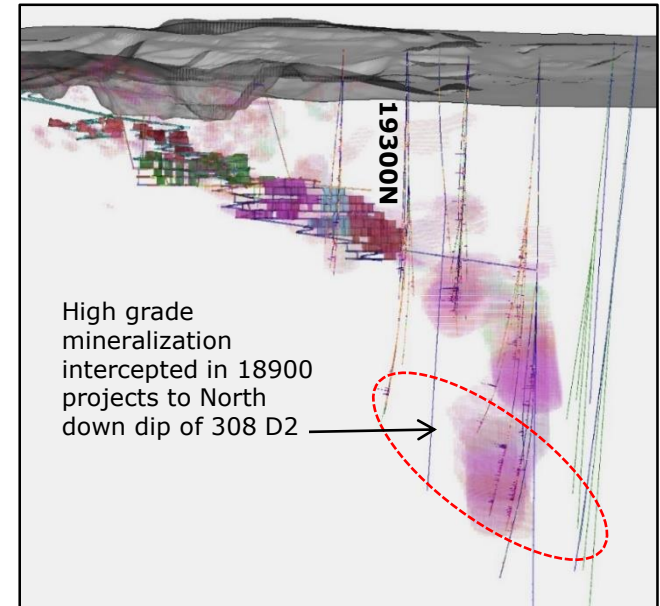
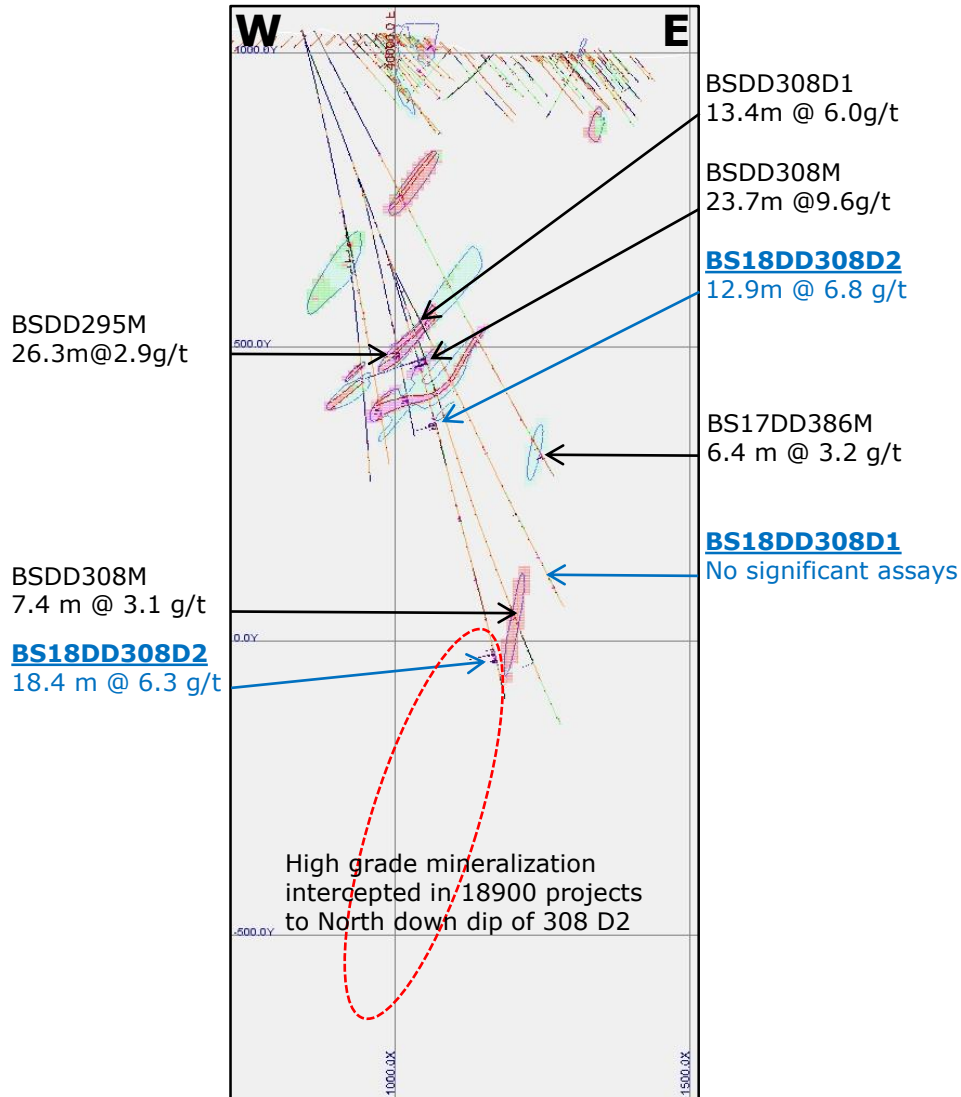
BS17DD387M
No significant
intersections

BS18DD389D1A
6.4m@1.5g/t
4.0m@4.5g/t



- BSDD390M demonstrates variability of gold distribution at Wassa, which was already a known variable
- A daughter hole BS18DD390D1 is planned to test F Shoot at depth

Wassa South Drilling: 19300 N



- BS18DD308D2 has intersected what has been interpreted as F Shoot
- Mineralized zone is wider and higher grade than up dip hole and remains open down dip
- Additional drilling down dip of this hole is warranted
- Another hole is planned, which is expected to increase Inferred Mineral Resource