

Golouma NW Exploration Results

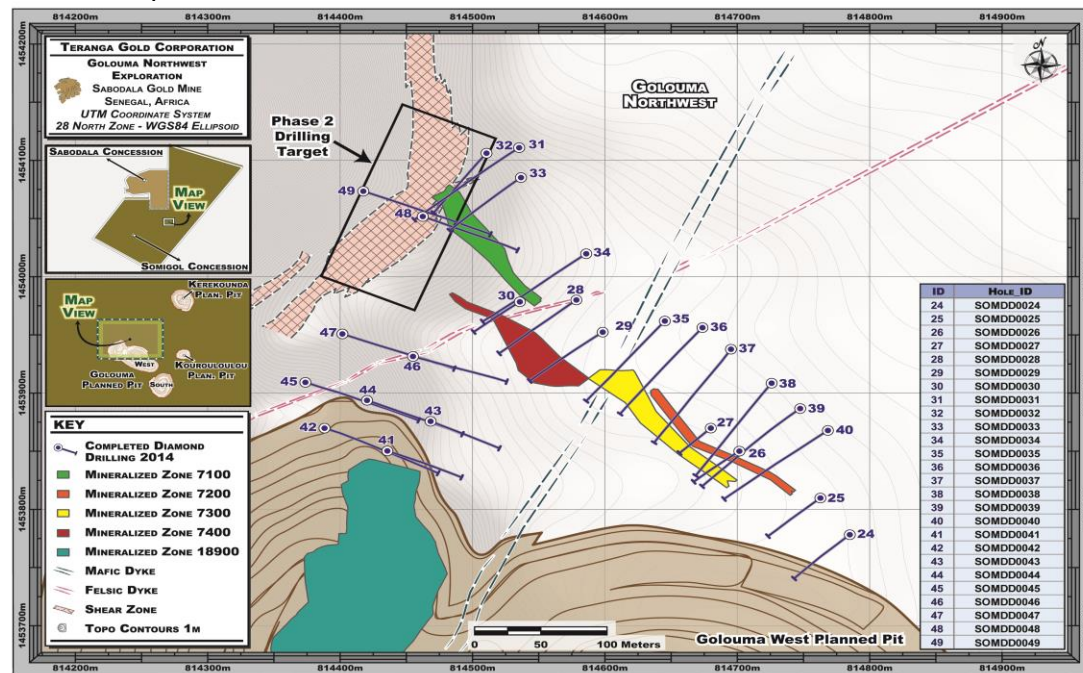
DDH intersections, >0.2 g/t Au with max 2m internal dilution/no external dilution

HOLE ID	UTM28N East	UTM28N North	Azimuth	Dip	Downhole Depth (m)	Intercept Values (core length @ g/t Au)	Estimated True Width (m)
SOMDD0026	814,702	1,453,850	234	-51	10.00	12m @ 3.66 g/t	8.0
including					15.00	3m @ 8.44 g/t	2.0
and including					19.00	2m @ 5.49 g/t	1.4
					27.00	1m @ 0.27 g/t	0.7
					39.00	2m @ 0.23 g/t	1.4
SOMDD0027	814,680	1,453,870	227	-50	0.00	1m @ 1.44 g/t	0.7
SOMDD0028	814,578	1,453,980	232	-53	82.00	7m @ 0.88 g/t	4.2
including					87.00	2m @ 2.04 g/t	1.3
SOMDD0029	814,598	1,453,952	234	-54	54.00	1m @ 0.71 g/t	0.7
					60.00	1m @ 3.81 g/t	0.7
SOMDD0031	814,535	1,454,111	234	-50	0.00	8m @ 0.34 g/t	5.0
including					7.00	1m @ 1.01 g/t	0.7
					17.00	3m @ 1.30 g/t	2.0
including					19.00	1m @ 2.85 g/t	0.7
					22.00	1m @ 0.35 g/t	0.7
					39.00	2m @ 0.81 g/t	1.4
					116.00	2m @ 0.88 g/t	1.4
including					117.00	1m @ 1.31 g/t	0.7
SOMDD0032	814,511	1,454,106	219	-51	12.00	1m @ 0.23 g/t	0.7
					81.00	1m @ 4.37 g/t	0.7
SOMDD0033	814,537	1,454,085	232	-55	0.00	1m @ 0.37 g/t	0.8
					97.00	1m @ 0.34 g/t	0.8
					105.00	4m @ 0.58 g/t	2.5
					116.00	1m @ 3.81 g/t	0.8
SOMDD0035	814,645	1,453,962	221	-53	106.00	5m @ 2.23 g/t	3.2
					115.00	9m @ 1.57 g/t	5.5
including					115.00	1m @ 8.38 g/t	0.7
SOMDD0036	814,674	1,453,956	221	-50	2.00	4m @ 0.66 g/t	2.6
					9.00	1m @ 0.25 g/t	0.7
					38.00	2m @ 0.33 g/t	1.4
					108.00	3m @ 0.68 g/t	2.2
including					109.00	1m @ 1.25 g/t	0.7
					131.00	5m @ 20.81 g/t	3.5
including					131.00	2m @ 33.20 g/t	1.4
					141.00	8m @ 7.31 g/t	5.5
including					146.00	3m @ 16.50 g/t	2.0
SOMDD0037	814,695	1,453,938	214	-50	4.00	3m @ 0.46 g/t	2.0
					124.00	4m @ 4.15 g/t	2.7
including					125.00	1m @ 14.85 g/t	0.8
					148.00	2m @ 1.50 g/t	1.6
including					148.00	1m @ 2.58 g/t	0.8
SOMDD0038	814,726	1,453,909	217	-51	73.00	2m @ 0.29 g/t	1.4
					76.00	19m @ 0.74 g/t	11.5
including					78.00	1m @ 1.78 g/t	0.8
and including					83.00	1m @ 2.11 g/t	0.8
and including					92.00	2m @ 1.54 g/t	1.4
					111.00	6m @ 1.29 g/t	4.0
including					112.00	1m @ 2.85 g/t	0.8
and including					115.00	1m @ 4.01 g/t	0.8
SOMDD0039	814,747	1,453,887	231	-50	83.00	1m @ 0.23 g/t	0.6
					97.00	2m @ 18.61 g/t	1.4
					146.00	3m @ 4.80 g/t	2.3
SOMDD0040	814,768	1,453,868	234	-50	39.00	2m @ 0.38 g/t	1.5
					52.00	1m @ 0.31 g/t	0.6
					98.00	1m @ 0.40 g/t	0.6
					103.00	1m @ 0.86 g/t	0.6
					107.00	1m @ 0.92 g/t	0.6
					116.00	2m @ 2.35 g/t	1.5
					137.00	1m @ 0.58 g/t	0.6
SOMDD0041	814,436	1,453,850	111	-50	21.00	1m @ 0.74 g/t	0.8
					30.00	1m @ 2.05 g/t	0.8
					33.00	1m @ 0.32 g/t	0.8
					77.00	1m @ 0.50 g/t	0.8
SOMDD0042	814,388	1,453,870	110	-50	15.00	1m @ 1.17 g/t	0.8
					21.00	18m @ 1.40 g/t	15.0
including					21.00	2m @ 3.46 g/t	1.5
and including					25.00	1m @ 2.05 g/t	0.8
and including					36.00	3m @ 3.77 g/t	2.5
					71.00	2m @ 0.45 g/t	1.8
					125.00	1m @ 0.32 g/t	0.8

					128.00	1m @ 0.42 g/t	0.8
SOMDD0043	814,468	1,453,876	114	-50	81.00	1m @ 0.21 g/t	0.8
SOMDD0044	814,420	1,453,894	112	-50	100.00	1m @ 0.21 g/t	0.8
					104.00	2m @ 0.45 g/t	1.5
SOMDD0045	814,374	1,453,909	110	-50	10.00	2m @ 0.87 g/t	2.0
including					11.00	1m @ 1.34 g/t	1.0
					30.00	2m @ 0.62 g/t	2.0
					37.00	1m @ 0.67 g/t	1.0
					66.00	6m @ 0.92 g/t	5.5
including					68.00	1m @ 1.03 g/t	0.8
and including					70.00	2m @ 1.72 g/t	1.8
					122.00	1m @ 0.64 g/t	0.8
					128.00	1m @ 0.25 g/t	0.8
SOMDD0047	814,402	1,453,951	110	-50	18.00	1m @ 0.87 g/t	0.5
					48.00	2m @ 1.17 g/t	1.5
SOMDD0048	814,462	1,454,052	112	-50	0.00	2m @ 1.16 g/t	1.8
					61.00	13m @ 4.61 g/t	10.0
including					62.00	9m @ 6.36 g/t	7.0
SOMDD0049	814,417	1,454,074	110	-50	25.00	11m @ 1.06 g/t	11.0
including					26.00	2m @ 1.44 g/t	2.0
and including					29.00	4m @ 1.64 g/t	4.0
					121.00	3m @ 2.05 g/t	2.5

Notes: Reported widths are estimated true widths. Intercept gold values are composited from 1m length uncapped assays.

Golouma NW Exploration



Section View of Golouma NW

