



WH File #10-072-01

Heritage Overview

Fortune Minerals Limited Sask Metal Processing Plant

Submitted To
:
MDH Engineered Solutions
January, 2011

January 21, 2011

Mr. Wade Sumners
MDH Engineered Solutions Corp.
Agent For: Fortune Minerals Limited
232-111 Research Drive
Saskatoon, SK
S7N 3R2

***Reference: The Heritage Resource Review Referral for Fortune Minerals Limited
Sask Metal Processing Plant SE 23-39-07 W3M, NE 14-39-07 W3M, NW 14-39-07
W3M***

Dear Mr. Sumners,

Please be advised that Western Heritage completed the heritage overview of locations SE1/4 23-39-07 W3M, NE1/4 14-39-07 W3M, and NW1/4 14-39-07 W3M on behalf of Fortune Minerals Limited. This report outlines the results of the heritage screening. Each of the locations are not considered heritage sensitive.

Sincerely,



Leanne Belsham, M.A.
Archaeologist

Introduction

In determining the need for, and scope of, a heritage resource impact assessment (HRIA) pursuant to Section 63 of *The Heritage Property Act* of Saskatchewan, the following factors were considered: the presence of previously recorded heritage sites, the area's overall heritage resource potential, the extent of previous land disturbance, and the scope of the new proposed land development. The Heritage Conservation Branch of the Ministry of Tourism, Parks, Culture and Sport in Regina further states that if a site is disturbed, it is the proponent's responsibility to report the site (as laid out in Section 71 of the *Heritage Property Act*). Depending on the significance of the site, an HRIA or other salvage measure may be required. This is set out in Section 71 (3) of the *Heritage Property Act*, which indicates that a fortuitous discovery may be subject to provisions under Section 63 (the portion of the act that describes the HRIA process).

Heritage Screening

The proposed Fortune Minerals Limited Sask Metal Processing Plant in SE1/4 Sec 23 Twp 39 Rge 07 W3M, NE1/4 Sec 14 Twp 39 Rge 07 W3M, and NW1/4 Sec 14 Twp 39 Rge 07 W3M was screened by Western Heritage using the above criteria. Results are presented in Table 1. The screening tools include the Government of Saskatchewan Tourism, Park, Culture and Sport Developers' Online Tool, which was searched to assess the area's overall heritage potential. The provincial archaeological inventory database (NTS map sheet 73 B/07) was searched in order to determine the presence of previously recorded heritage sites near or within the proposed expansion. The Saskatchewan Cemeteries Index and the Saskatchewan Homestead Index were also searched for the presence of known cemeteries and homesteads in the proposed expansion. Google Earth imagery combined with 2008 SPOT satellite imagery were examined to determine the extent of previous land disturbances within the proposed project.

A historical overview of the SE1/4 Sec 23 Twp 39 Rge 07 W3M, NE1/4 Sec 14 Twp 39 Rge 07 W3M, and NW1/4 Sec 14 Twp 39 Rge 07 W3M indicates that there are no historical features evident. The township maps for 1885 and 1903 (Figures One and Two) show that there are no trails, telegraph lines, or other historic features to indicate prior use of the area. The historic trails map provided in the *Atlas of Saskatchewan* by J.H. Richards and K.I. Fung (1969) also served as a source as recommended by Dale Russell, a noted historian. Furthermore, the Encyclopedia of Saskatchewan (<http://esask.uregina.ca.html>) was examined for the location of First Nations Residential Schools in each of the quarters. There are no known schools in the Langham and surrounding area.

The TPCS Developer's Online Tool indicates that each of the quarter sections impacted by the proposed metal processing plant are not considered to be heritage sensitive (Figures three through five). The results of the online tool notes that it is not necessary to submit the project to the Heritage Conservation Branch in Regina for further screening. Furthermore, the screening of the impacted quarter sections by Western Heritage did not indicate known cemeteries evident in the area. There is one homestead record for the NE1/4 Sec14 Twp 39 Rge 07 W3M, and two records showing for the NW1/4 Sec14 Twp 39 Rge 07 W3M. The SE1/4 Sec23 Twp 39 Rge 07

W3M does not have any homestead records. There are no archaeological sites in direct conflict with the proposed metal processing plant.

Table 1 Heritage Screening Results of Metal Processing Plant

Location	Developers Online Tool	Provincial Database	Cemeteries Index	Homestead Index	Vegetation	HRIA
SE 1/4 Sec 23 Twp 39 Rge 07 W3M	No	None	None	None	Disturbed	No
NE 1/4 Sec 14 Twp 39 Rge 07 W3M	No	None	None	One Record	Disturbed	No
NW1/4 Sec 14 Twp 39 Rge 07 W3M	No	None	None	Two records	Disturbed	No

Western Heritage is not recommending a heritage resource impact assessment for SE1/4 Sec 23 Twp 39 Rge 07 W3M, NE1/4 Sec 14 Twp 39 Rge 07 W3M, and NW1/4 Sec 14 Twp 39 Rge 07 W3M as understood under *The Heritage Property Act* of Saskatchewan.

Submitted By



Leanne Belsham, M.A.
Western Heritage
Archaeologist

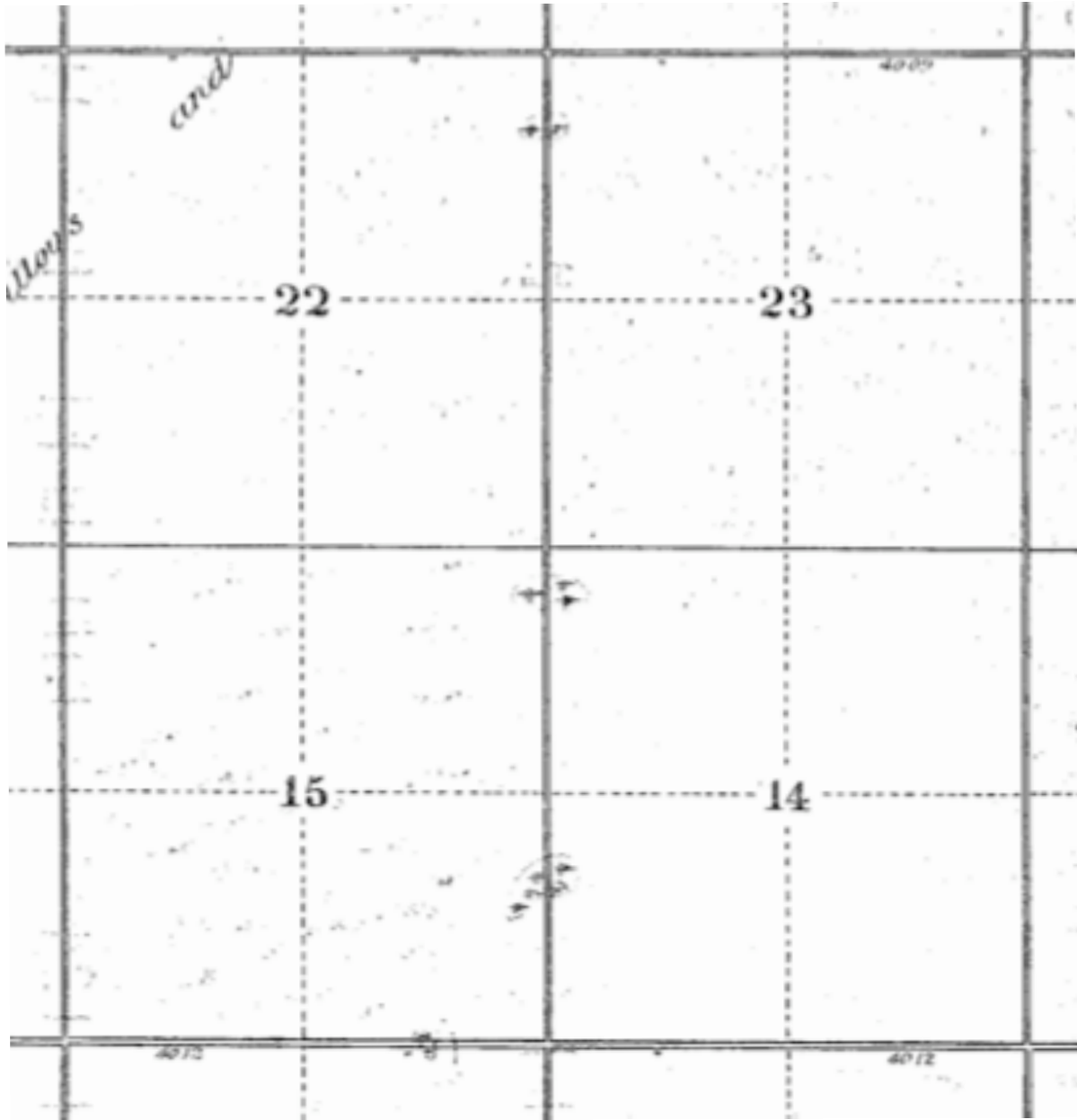


Figure One: 1885 township map

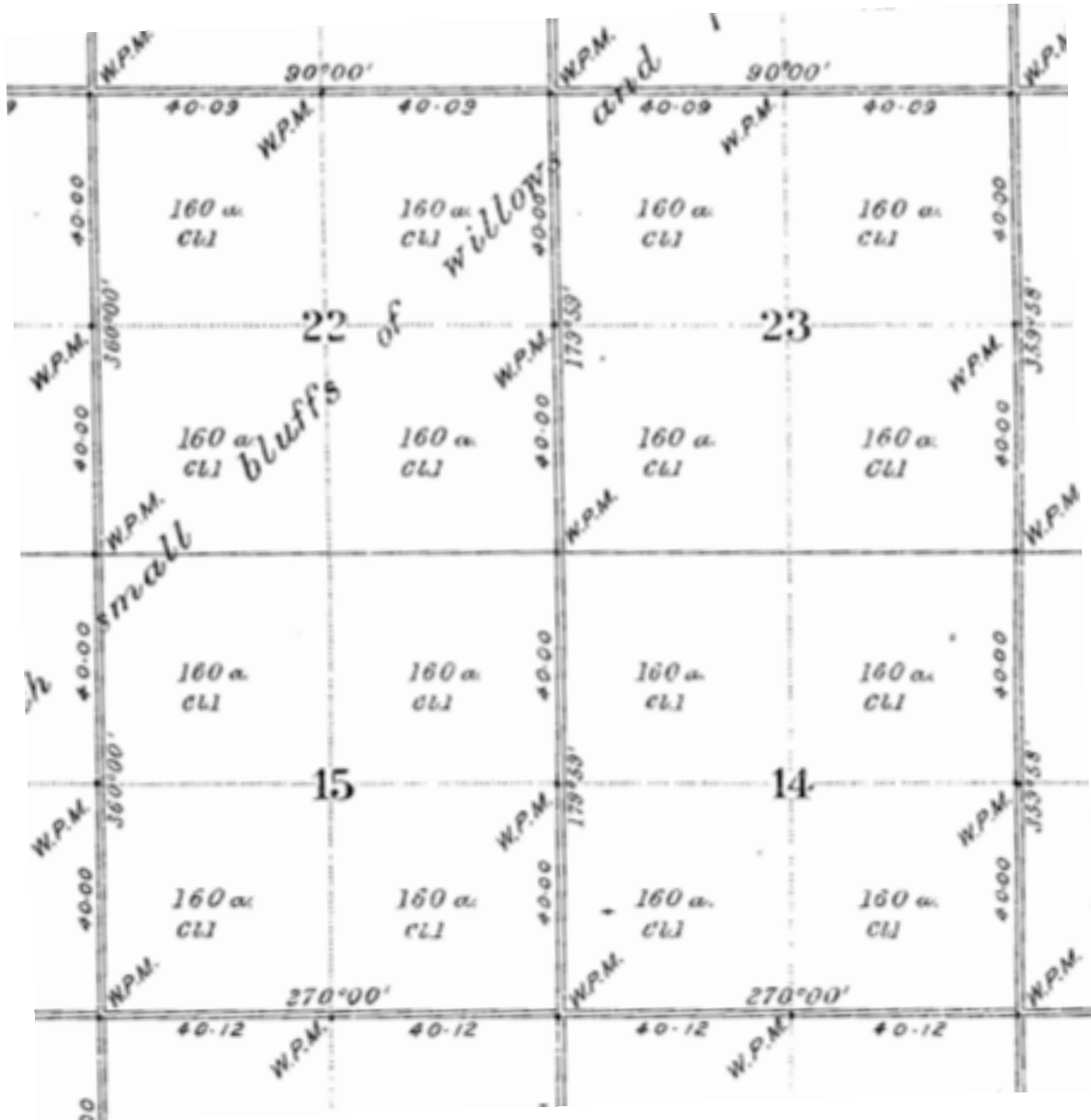


Figure Two: 1903 township map.



ABOUT TOURISM, PARKS, CULTURE AND SPORT

Inquiry was made on January 21, 2011 at 9:52 AM

You are inquiring about the heritage sensitivity of the following land location:

Quarter-section: SE

Section: 23

Township: 39

Range: 07

Meridian: 3

This quarter-section is **NOT** heritage sensitive.

It is not necessary to submit the project to the Heritage Conservation Branch for screening. These results can be printed for submission to other regulatory bodies (e.g. Saskatchewan Environment, Saskatchewan Industry and Resources). Please email arms@gov.sk.ca if you have any questions.

Inquiry was made on January 21, 2011 at 9:52 AM

[Home](#) / [About TPCS](#) / [Heritage](#) / [Developers' Online Screening Tool](#) / [Land Locations Search](#)

© 2011 Government of Saskatchewan. All rights reserved.

Figure Three: TPCS Developers Online tool result for SE1/4 Sec 23 Twp 39 Rge 07 W3M.



ABOUT TOURISM, PARKS, CULTURE AND SPORT

Inquiry was made on January 21, 2011 at 9:49 AM

You are inquiring about the heritage sensitivity of the following land location:

Quarter-section: NE

Section: 14

Township: 39

Range: 07

Meridian: 3

This quarter-section is **NOT** heritage sensitive.

It is not necessary to submit the project to the Heritage Conservation Branch for screening. These results can be printed for submission to other regulatory bodies (e.g. Saskatchewan Environment, Saskatchewan Industry and Resources). Please email arms@gov.sk.ca if you have any questions.

Inquiry was made on January 21, 2011 at 9:49 AM

[Home](#) / [About TPCS](#) / [Heritage](#) / [Developers' Online Screening Tool](#) / [Land Locations Search](#)

© 2011 Government of Saskatchewan. All rights reserved.

Figure Four: TPCS Developers Online tool result for NE1/4 Sec 14 Twp 39 Rge 07 W3M.



ABOUT TOURISM, PARKS, CULTURE AND SPORT

Inquiry was made on January 21, 2011 at 9:05 AM

You are inquiring about the heritage sensitivity of the following land location:

Quarter-section: NW

Section: 14

Township: 39

Range: 07

Meridian: 3

This quarter-section is NOT heritage sensitive.

It is not necessary to submit the project to the Heritage Conservation Branch for screening. These results can be printed for submission to other regulatory bodies (e.g. Saskatchewan Environment, Saskatchewan Industry and Resources). Please email arms@gov.sk.ca if you have any questions.

Inquiry was made on January 21, 2011 at 9:05 AM

[Home](#) / [About TPCS](#) / [Heritage](#) / [Developers' Online Screening Tool](#) / [Land Locations Search](#)

© 2011 Government of Saskatchewan. All rights reserved.

Figure Five: TPCS Developers Online tool result for NW1/4 Sec 14 Twp 39 Rge 07 W3M.